



## Research Data Alliance Association AISBL

Boulevard Louis Schmidt, 24

ETTERBEEK 1040, Belgium

[www.rd-alliance.org](http://www.rd-alliance.org)

Director: Dr. Ari Asmi, eMBA, [ari.asmi@rda-foundation.org](mailto:ari.asmi@rda-foundation.org)

General enquiries: [eu.financial.officer@rda-foundation.org](mailto:eu.financial.officer@rda-foundation.org)

Dear RDA National Network representatives,

You are warmly welcome in the “*RDA Europe meets the European RDA Networks*” meeting!

This is a short document giving you the

- agenda of the meeting,
- basic background on the Research Data Alliance Association AISBL,
- information on new upcoming RDA TIGER project (scheduled to start 2023-01-01),
- initial the discussion points for our breakout sessions.

The program is intentionally loose, and I hope we can encourage all of you to openly discuss the potential of the RDA Association, and your ideas on how we could better serve your needs in future!

With kind regards,

A handwritten signature in black ink, appearing to be 'Ari Asmi', written in a cursive style.

Ari Asmi

Director,

Research Data Alliance Association AISBL



## Research Data Alliance Association AISBL

Boulevard Louis Schmidt, 24  
 ETTERBEEK 1040, Belgium  
[www.rd-alliance.org](http://www.rd-alliance.org)  
 Director: Dr. Ari Asmi, eMBA, [ari.asmi@rda-foundation.org](mailto:ari.asmi@rda-foundation.org)  
 General enquiries: [eu.financial.officer@rda-foundation.org](mailto:eu.financial.officer@rda-foundation.org)

### ***RDA Europe meets the European RDA Networks***

Please register first! This helps us to pre-organise you in the Breakout rooms in the second session. Registration link:

[https://us02web.zoom.us/meeting/register/tZEkf-ytpzgpHNdCWZ\\_PCg64Qmez0ykNOWxT](https://us02web.zoom.us/meeting/register/tZEkf-ytpzgpHNdCWZ_PCg64Qmez0ykNOWxT)

You will receive the connection details immediately after registration in an email.

### **AGENDA**

#### Part 1. Information on the RDA Association (Europe) and RDA TIGER

9:00 – 9:15	Greetings and Introductions (15 min)	
9:15 – 9:25	RDA status in global and European landscape	Hilary Hanahoe, RDA
9:25 – 9:45	What is RDA Association AISBL (Europe)? What have we been up to?	Ari Asmi, RDA-A
9:45-9:55	Questions / comments	
9:55-10:10	RDA TIGER – new European RDA project to support Working Groups	Ari Asmi, RDA-A
10:10-10:15	Questions / comments	
10:15-10:30	Coffee break	

#### Part 2. Interactive discussions

10:30-10:40	Intro: Potential for collaboration? How could the RDA Association interact with European National Networks? What do you see important?	Najla Rettberg, RDA-A
10:40-11:15	Discussion in Breakout rooms	Facilitators
11:15-11:30	Coffee break	
11:30-11:40	Reports from the Breakouts	Facilitators
11:40-12:00	Open Questions / comments / ideas	
12:00	End of meeting	



## Research Data Alliance Association AISBL

Boulevard Louis Schmidt, 24  
ETTERBEEK 1040, Belgium  
[www.rd-alliance.org](http://www.rd-alliance.org)  
Director: Dr. Ari Asmi, eMBA, [ari.asmi@rda-foundation.org](mailto:ari.asmi@rda-foundation.org)  
General enquiries: [eu.financial.officer@rda-foundation.org](mailto:eu.financial.officer@rda-foundation.org)

### Research Data Alliance Association AISBL Factsheet

(also called: RDA-A, RDA (EU) )

**Type:** International non-profit association under Belgian law (AISBL)

**Founded:** 2020 as ASBL, 2021 as AISBL

**Board:** (2022) Ingrid Dillo (President), Hilary Hanahoe, Edit Herczog (Treasurer), Sandra Collins (Vice-President)

#### Staff:

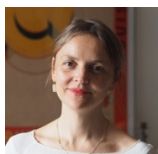
**Ari Asmi**

Director  
(all projects)  
Located in Finland  
[ari.asmi@rda-foundation.org](mailto:ari.asmi@rda-foundation.org)



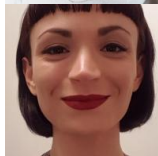
**Najla Rettberg**

Project Manager  
(EOSC FUTURE, FAIRImpact)  
Located in Germany



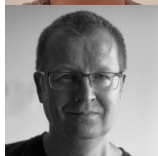
**Alexandra Delipalta**

Communication & Engagement officer  
(EOSC FUTURE, WorldFAIR)  
Located in Ireland



**Matti Heikkurinen**

Engagement in EOSC FUTURE  
(EOSC FUTURE)  
Located in Switzerland



**Peter Szeredi**

Financial officer (Part time, AISBL)  
Located in Belgium

Current projects and main activities: (all European Commission funded)

**[EOSC FUTURE](#)** : Organisation of [RDA calls](#) and related engagement

**[FAIRIMPACT](#)** : Interoperability related engagement

**[WorldFAIR](#)** : Communications, engagement

Selected other AISBL activities:

- Collaboration with [EOSC Association](#) on mapping [Key Exploitable Results from recent EOSC projects](#) – particularly to find out how to further them in RDA.
- Supporting creation of [CoARA](#) (Coalition for Advancing Research Assessment)
- In-kind support for the [RDA Secretariat](#) (e.g. on plenary preparation, communication activities related to 10 year anniversary)

**RDA TIGER factsheet**

*Project starting date: 2023-01-01*

*Project duration: 3 years*

*Partners: RDA Association, CODATA, NL eScienceCenter, DANS*

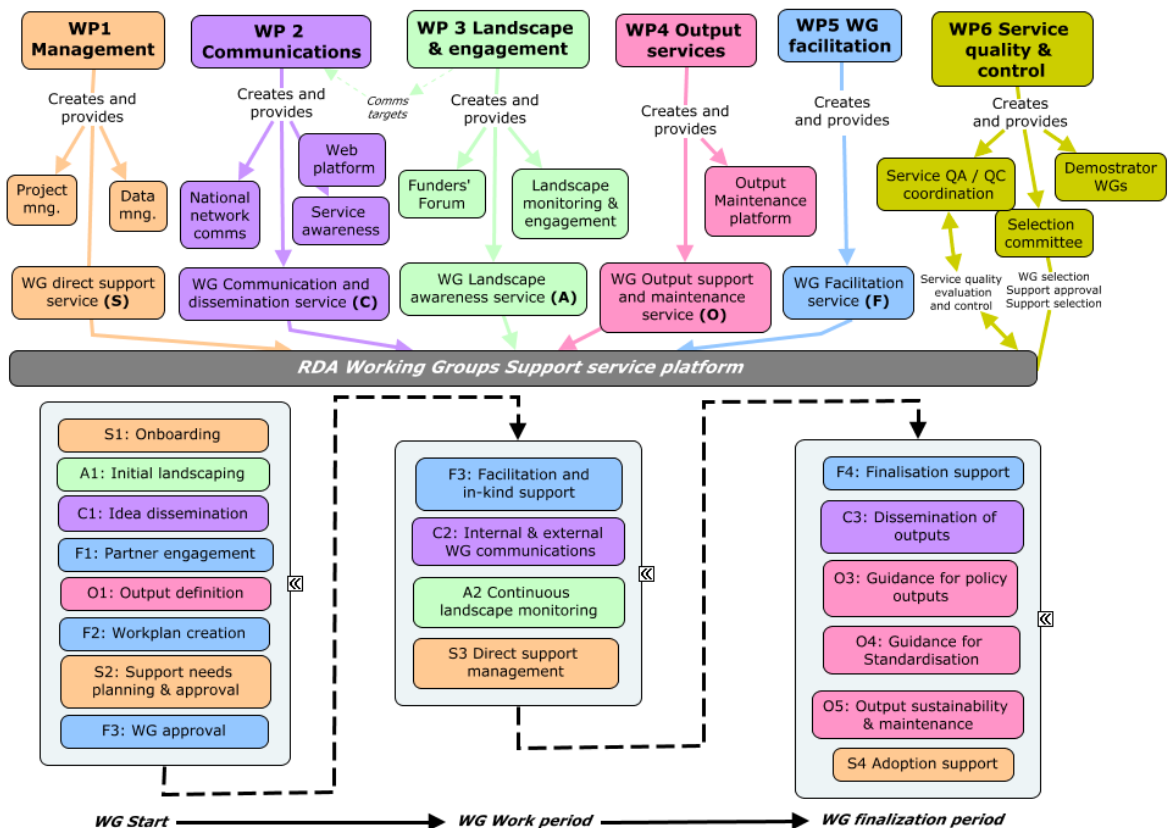
*Budget: 3 million Euros, Coordination and Support Action*

**Idea: Support RDA Working Groups with directed services**

**Abstract: Working Groups can apply for support services for their work, before, during and (just) after the WG operations. The services include:**

- Direct support (in-kind and contracted), e.g. surveys, editing, data analysis, adaptation.
- Communication and dissemination (inc. towards European National Networks).
- Landscape analysis and engagement, e.g. scouting WG members outside or RDA
- Output services, e.g. RDA maintenance facility, WG Output support
- WG facilitation, taking most of the organisational effort from WG chairs

These are supported by management and Service QC services.





## Research Data Alliance Association AISBL

Boulevard Louis Schmidt, 24

ETERBEEK 1040, Belgium

[www.rd-alliance.org](http://www.rd-alliance.org)

Director: Dr. Ari Asmi, eMBA, [ari.asmi@rda-foundation.org](mailto:ari.asmi@rda-foundation.org)

General enquiries: [eu.financial.officer@rda-foundation.org](mailto:eu.financial.officer@rda-foundation.org)

### Discussion event:

#### What can RDA do for your national RDA network?

*(Preliminary list)*

- **What should be the role of RDA Association vis-a-vis with European National RDA Networks? E.g.:**
  - Do you see the “European Level” useful for your national level activities? Connection to Commission, other needs?
  - Do you see the value of European level coordination and communication by RDA Association?
  - Are there other European level organisations RDA Association should synchronise with?
- **How can the RDA Association support your national activities? Are there special needs for your national networks which European level network could help? E.g.:**
  - RDA TIGER related help? Translations, integration into local practices and events?
  - Bridging the national level and global level with European services?
  - Communication, engagement help?
  - Bridging to the research communities, helping to discuss practices and disciplinary standards
  - Mapping national data activates to avoid duplication in RDA WGs/IGs
  - Mapping to the EOSC Association groups (and EOSC projects)
  - Policy support? Special WGs on policy translation and implementation
  - Other kinds of services?
- **How do you see the interaction between the Association and the European National Networks? E.g.:**
  - What kind of engagement tools (meetings, forums, etc) should we have?
  - What kind of communications you would like to see? Newsletters, updates on website, communication material? National ‘digests’
  - Visibility via the (new) RDA portal – blogs etc.
  - Information preparation and guidance around data sharing standards/specifications to reuse in Digital Competence Centres to help:
    - connectivity to European and Global
    - Specific messaging to disciplinary groups
    - The common language of data: Preparation to expand beyond ‘research’ data e.g different sector data management – industry, citizen science, health. Data sharing agreements